

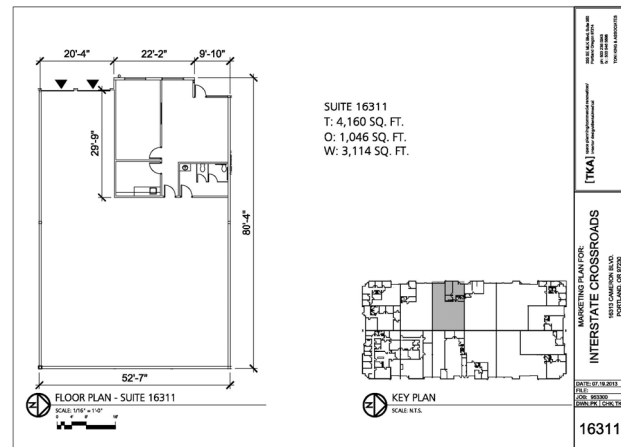


Interstate Crossroads Building 7

16311

16311 NE Cameron Blvd, Portland, OR 97230

Space for Lease



Building Specs:

Building / Shell Size:	4160 SF
Finished Office:	1046 SF
Availability:	7/1/2013
Clear Height:	20'
Loading:	2 Dock Doors

Network wired, fire protection

Located just off NE 158th Avenue between NE Airport Way and Marine Drive on NE Cameron Blvd. – just minutes from I-205, I-84 and Portland International Airport.

For more information, contact Three Oaks Development Co.
Cameron J. Warren Jr.: 971-236-9500 ext 1



www.threeoaks.com