



16307

Interstate Crossroads Building 7

16307 NE Cameron Blvd, Portland, OR 97230

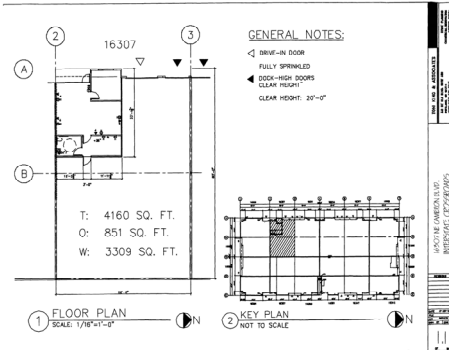
Space for Lease



Building Specs:

Building / Shell Size: 4160 SF

Finished Office: 851 SF



Building 7, 16307 Additional Specs

Clear Height 20'

Loading: 0 Grade Door – 2 Dock Door

Power: 120/208, 200 amp, 3 phase

Additional Amenities: Network wired, fire protection

Located just off NE 158th Avenue between NE Airport Way and Marine Drive on NE Cameron Blvd. – just minutes from I-205, I-84 and Portland International Airport.

For more information, contact Three Oaks Development Co.
Cameron J. Warren Jr.: 971-236-9500 ext 1



www.threeoaks.com